

FOR THE LOVE OF SCRUBS

MMC SCRUBS PANTS

Simple 1/2 elastic drawstring pants.

Meterage; 1.70mtrs on 150cm wide, 2.40mtrs on 115cm wide.

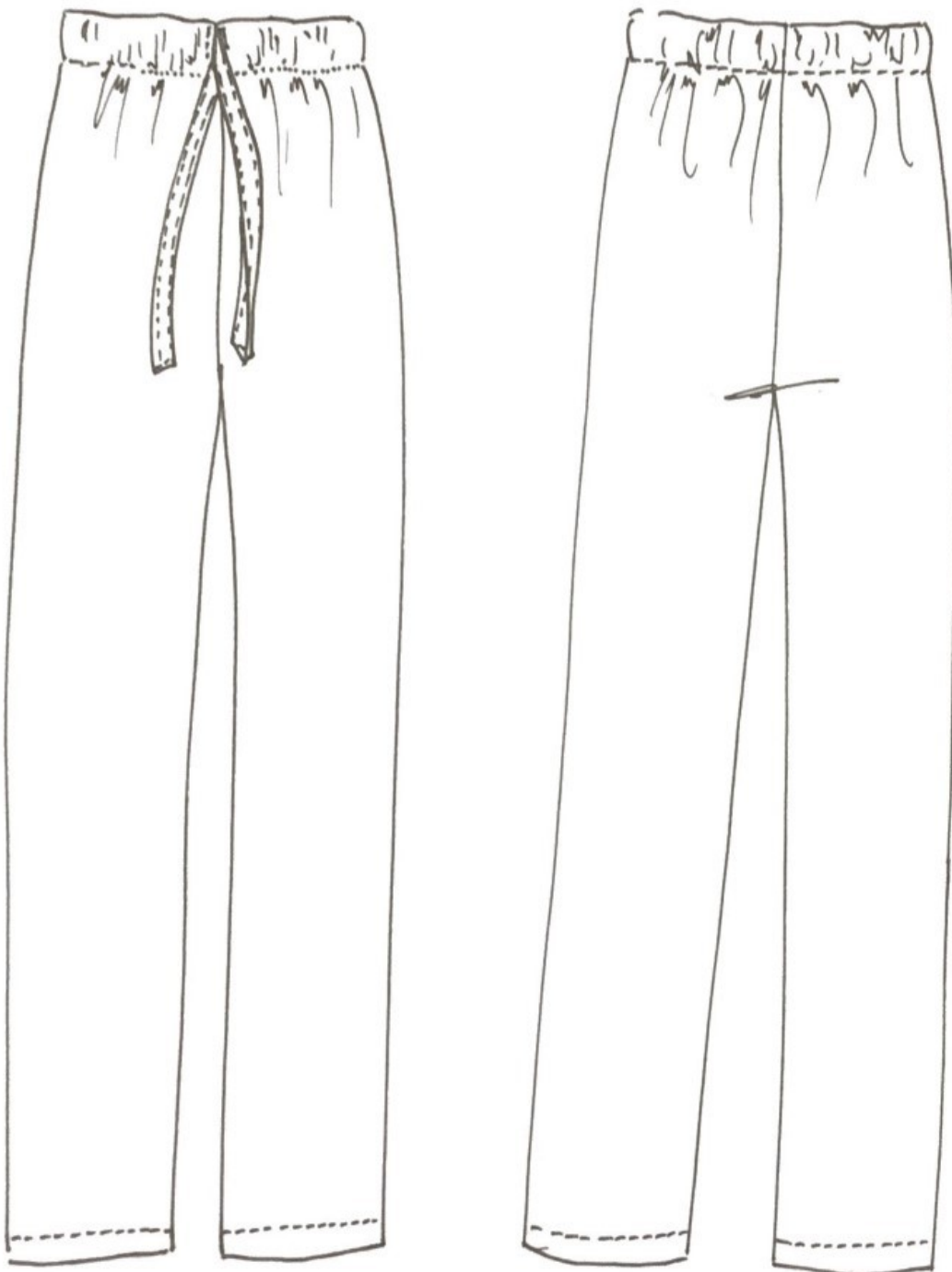
Requires 1.5cm elastic. (can also be made with a simple cord)

SEAM ALLOWANCES;

inside and outside leg 1cm

Hem 4cm total = 1cm turn and 3cm turn. Enough to let down for a taller person

Waistband 4cm total = 1cm turn and 3cm channel for drawstring.



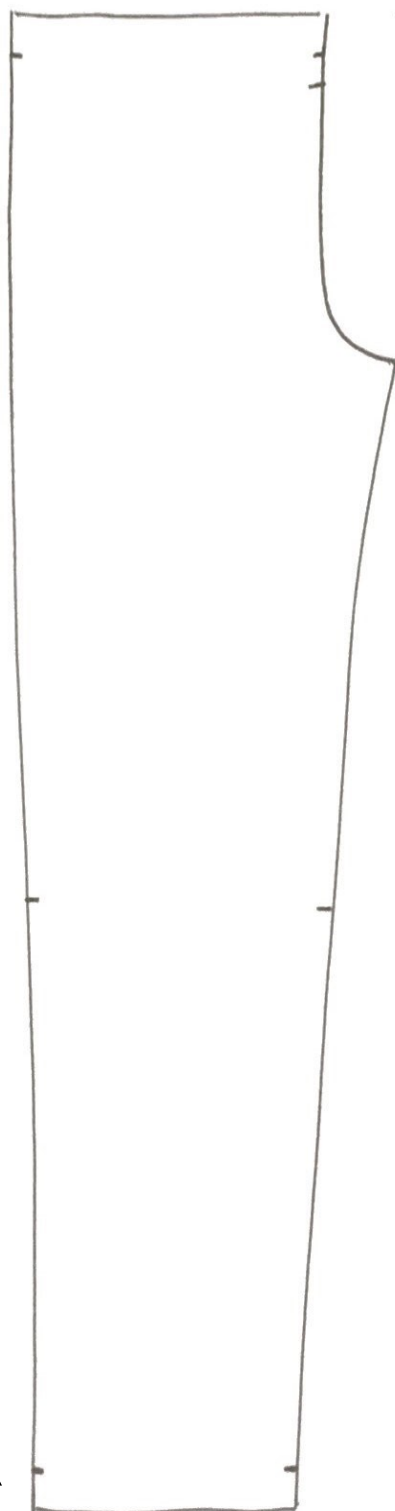
Elastic measurements for Drawstring.

S 14" M 17" L 20" XL 22" XXL 24"

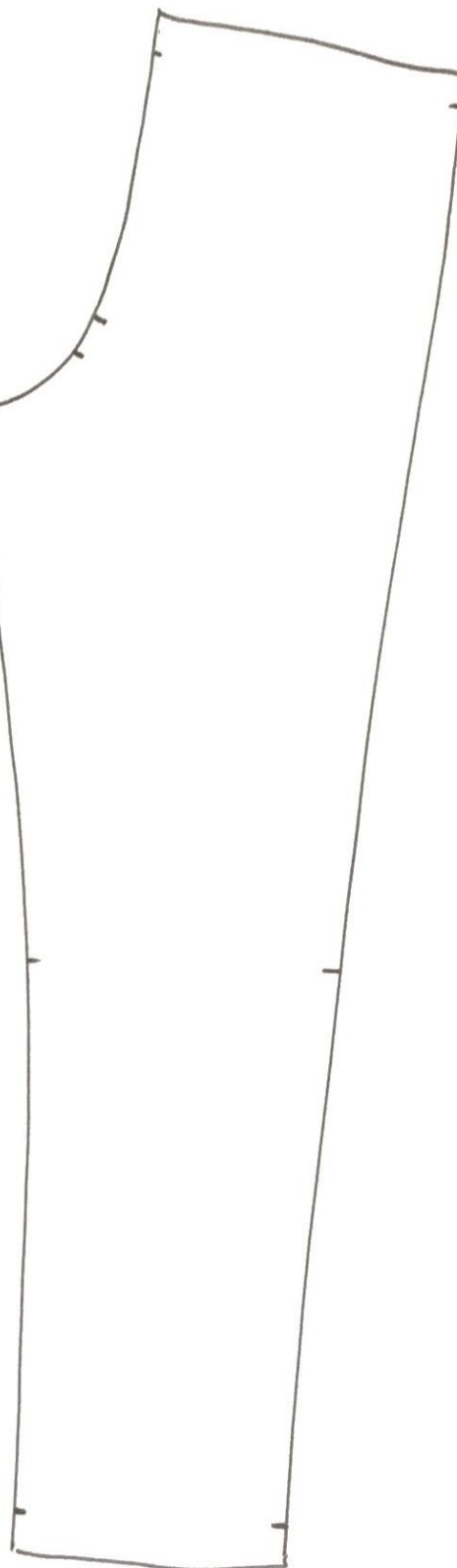
FRONT

BACK

4cm



4cm



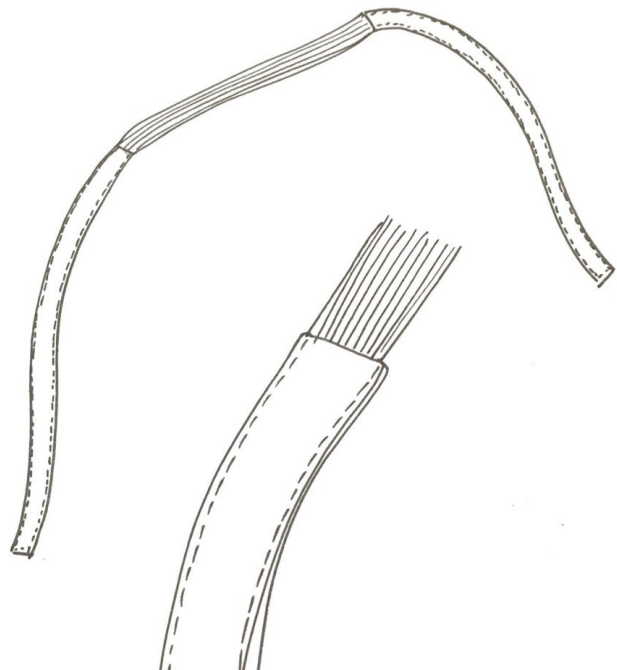
Instructions

1. Overlock CF seam separately to 6cm past the second notch.
2. Stich CF seam leaving gap between notches for drawstring. Overlock rest of seam together.
3. Topstitch round opening.



4. Join CB seam and overlock.
 5. Join outside legs and inside legs, overlock.
- *Note; can be joined with crutch seam on the round and topstitched for extra strength.
6. Turn over waist edge 1cm then turn 3cm securing just below CF drawstring opening.

7. Hem legs 1cm then 3cm.
8. Turn through belt strips neatening one end and securing elastic between the other two ends.
9. Thread belt through front opening of pants.
- !0. Cord could be used in place of constructed belt.



Scrubs pants complete!

* For anyone more experienced in constructing trousers.